



## Liquid Roofing Products



*Catalogo en Español*



**3 - Base Coat**

**4 - Finish Coat**

**5 - Fabric Reinforcement**

**6 - DEK-coat**

**7 - Brushable Sealant**

**8 - Metal Prep-Rust Inhibitive Primer**

**9 - Rinse Prep**

**10 - Liquid Walk Pad**

**11 - New Clear**

**12 - Acrypel**

**13 - Acrycrete-Cementitious Systems**

**14 - Asphalt Emulsion**

**15 - Patch Kit**

**16 - Tool Kit**

**17 - Coverage Rates**



## Liquid Roofing Products

# Base Coat

### PRODUCT DESCRIPTION

**Acrylabs Base Coat** is a water based, 100% acrylic elastomeric product and is a component of the **Acrylabs Liquid Applied Roof Membrane - Systems**. It is used to embed and adhere Acrylabs Fabric Reinforcement. The **Base Coat** formulation is engineered for maximum adhesion to new surfaces, such as concrete, plywood, OSB, EPS, fiberglass, cement board, and existing surfaces such as asphalt, BUR, modified bitumen, EPDM, single ply membrane systems and metal.

### APPLICATION

**Base Coat** can be brush, roll or spray applied. Two coats are always required. The first coat tacks the Fabric Reinforcement in place, the second coat saturates the Fabric Reinforcement.



### SAFETY AND HANDLING



SDS



### COVERAGE

1.25 gal/100 SF will achieve  
10 dry mils per coat.

### PACKAGING

**Base Coat** is only available in Base Gray.

**Base Coat** is available in 5 and 55 gallon plastic containers.





Liquid Roofing Products

# Finish Coat

## PRODUCT DESCRIPTION

**Acrylabs Finish Coat** is a water based, 100% acrylic elastomeric product and is a component of the **Acrylabs Liquid Applied Roof Membrane - Systems**. The **Finish Coat** formulation is engineered for maximum adhesion to new surfaces, such as concrete, plywood, OSB, EPS, fiberglass, cement board, and existing surfaces such as asphalt, BUR, modified bitumen, EPDM, single ply membrane systems and metal. **Finish Coat** cures to a strong, durable finish that is easily maintained and is used as the final coats for the Acrylabs Roof Systems.

**Finish Coat** is an excellent product when used as a wall coating. The heavy bodied formulation fills minor cracks and voids and creates an exterior skin helping create a air and moisture barrier.

## APPLICATION

**Finish Coat** can be brush, roll or spray applied. Two coats are required to maintain a pinhole free membrane. Allow to dry before recoating.



## SAFETY AND HANDLING



SDS



## COVERAGE

1.25 gal/100 SF will achieve  
10 dry mils per coat.

## PACKAGING

**Finish Coat** is available in 5 and  
55 gallon plastic containers.





Liquid Roofing Products

# Fabric Reinforcement

## PRODUCT DESCRIPTION

**Acrylabs Fabric Reinforcement** is a high strength, stitch bonded, reinforcement fabric and is a key component of **Acrylabs Liquid Applied Roof Membrane - Systems**.

**Fabric Reinforcement** is lightweight and flexible, yet tough and durable.

## APPLICATION

Apply a generous coat of **Base Coat**. While wet, embed **Fabric Reinforcement**, make sure the fabric is tight to the surface and mechanically smooth out all wrinkles and fish mouths. Immediately apply saturation coat (2nd coat) of **Base Coat**.



## PACKAGING

**Fabric Reinforcement** is available in various sizes.



## COVERAGE

Standard 300 LF roll.  
Coverage varies by Fabric width.



## SAFETY AND HANDLING



SDS





# Liquid Roofing Products

## DEK-coat

### PRODUCT DESCRIPTION

**Acrylabs DEK-coat** is a water based, 100% acrylic elastomeric product. It can be applied to the walking surfaces of decks and balconies with the fully reinforced Acrylabs Base System or as a stand alone coating. The **DEK-coat** formulation is engineered to perform well under normal foot traffic while providing a seamless and waterproof membrane. **DEK-Coat** is formulated for maximum adhesion to new and existing deck surfaces including fiberglass, plywood and concrete. **DEK-coat** cures to a strong, durable finish that is easily maintained. **DEK-coat** is also an excellent coating over the Acrylabs Acrycrete System.

### APPLICATION

**DEK-coat** can be brush, roll or spray applied. Two coats are required to create a pinhole free surface. Allow to dry before recoating.



### PACKAGING

**DEK-coat** is available in 5 and 55 gallon plastic containers. **DEK-coat** is available in Acrylabs standard colors.



### COVERAGE

80 SF per gallon (1.25 gal/100 SF) per coat.

### SAFETY AND HANDLING



SDS



Acrylabs' Aggregate can be added between coats to provide an attractive finish. This will also improve slip resistance and provide an extra degree of safety.



*How to*

## Liquid Roofing Products

# Brushable Sealant

### PRODUCT DESCRIPTION

**Brushable Sealant** is a water based, 100% acrylic formulation similar to Acrylabs coatings but enhanced to be heavier bodied and contains Kevlar reinforcement. **Brushable Sealant** is formulated to adhere to clean surfaces and is designed to address seams and fasteners on metal roofs. Can also be used to smooth irregular surfaces, fill joints, cracks and imperfections on existing deck surfaces.

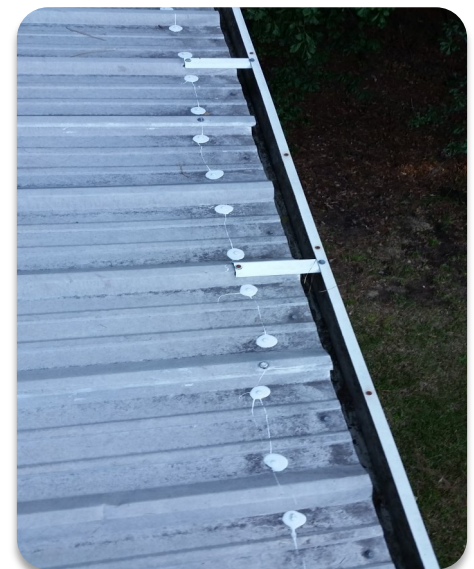
### APPLICATION

**Brushable Sealant** can be brushed or troweled on. Allow to dry between coats if multiple applications are required to build up a surface. Dry time will vary with the thickness of the application.



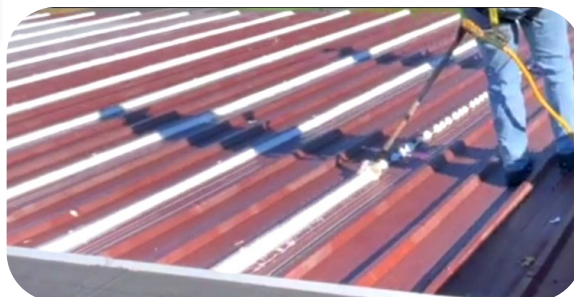
### PACKAGING

**Brushable Sealant** is available in 1 and 5 gallon plastic containers.



### COVERAGE

Seams - 150 LF per 1 gallon  
Fasteners - 300 count per 1 gallon



### SAFETY AND HANDLING



SDS



Liquid Roofing Products

# Metal Prep

## PRODUCT DESCRIPTION

**Acrylabs Metal Prep** is a single component water based, highly effective acrylic coating used to address rusted metal. The **Metal Prep** formulation is engineered for maximum adhesion to all types of rusty metal and provides excellent surface corrosion protection and prevents rust bleed through prior to application of **Acrylabs Liquid Applied Roof Membrane - Systems**.

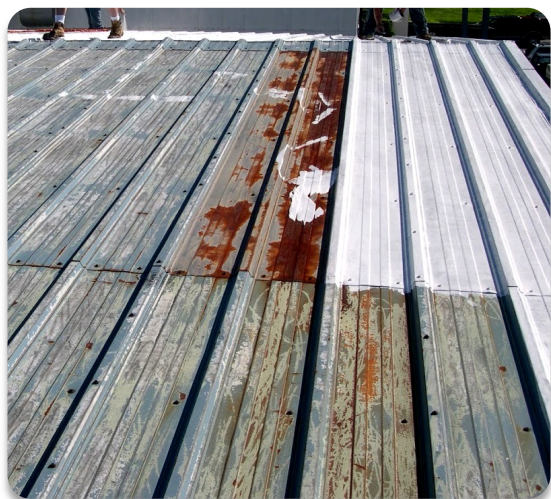
## APPLICATION

**Metal Prep** can be brush, roll or spray applied. **Metal Prep** should be applied at 150-200 SF per gallon to achieve the suggested dry film thickness of 2-3 mils (DFT). It can also be used to spot prime rust as needed.



## PACKAGING

**Metal Prep** is available in 1 and 5 gallon plastic containers.



## COVERAGE

**Metal Prep** will yield approximately 150-225 SF per gallon depending on surface texture.

## SAFETY AND HANDLING



SDS



Liquid Roofing Products

# Rinse Prep

## PRODUCT DESCRIPTION

**Acrylabs Rinse Prep** is an easy to use and water based EPDM cleaner that is formulated to promote maximum adhesion of **Acrylabs Liquid Applied Roof Membrane - Systems**. It is used to remove the oxidized carbon black from the EPDM surface and can also be used on other existing roof surfaces that require a cleaning.

## APPLICATION

**Rinse Prep** can be sprayed using a pump type garden sprayer. Application rate (approximately 500 SF per gallon) will vary with the condition of the surface. Allow ten to fifteen minutes to activate before power washing, with a minimum of 3000 psi.



## PACKAGING

**Rinse Prep** is available in 1 and 5 gallon plastic containers.



## COVERAGE

**Rinse Prep** will yield approximately 500 SF per gallon.



## SAFETY AND HANDLING



SDS



# Liquid Walk Pad

## PRODUCT DESCRIPTION

**Acrylabs Liquid Walk Pad** is a water based, 100% acrylic elastomeric product pre-mixed with rubber granules to provide texture and slip resistance. **Liquid Walk Pad** has been engineered to exhibit excellent elongation, UV resistance and weathering characteristics. The **Liquid Walk Pad** formulation is engineered for excellent adhesion to properly prepared substrates.

## APPLICATION

**Liquid Walk Pad** is recommended to be roller applied with a 1/4" nap roller cover. Cure time varies depending on temperature.



## PACKAGING

**Liquid Walk Pad** is available in 5 gallon plastic containers.



## COVERAGE

Approximately 30-50 SF per gallon depending on desired texture. One coat coverage needed.

## SAFETY AND HANDLING



SDS



Liquid Roofing Products

# NewClear

## PRODUCT DESCRIPTION

**Acrylabs NewClear** is a water based, 100% clear acrylic elastomeric coating used for sealing and renewing acrylic and fiberglass skylights. **NewClear** cures to a strong, durable finish that is easily maintained.

## APPLICATION

**NewClear** can be brush, roll or spray applied. Two coat minimum required.



## SAFETY AND HANDLING



SDS



## COVERAGE

A single gallon of **NewClear** covers approximately 200 SF per coat.

## PACKAGING

**NewClear** is available in 1 and 5 gallon plastic containers.





# AcryLabs

Liquid Roofing Products

# Acrypel

## PRODUCT DESCRIPTION

**Acrylabs Acrypel** is a high quality, silane/siloxane based acrylic water repellent that is formulated for maximum durability and adhesion. **Acrypel** can be applied to new or restored surfaces, high porosity concrete, split face block, brick, adobe, limestone, granite, sandstone, terracotta, stucco & mortar. **Acrypel** is an excellent block sealer and can be used on most vertical or horizontal exterior and above grade masonry surfaces. **Acrypel** performs well in a variety of climates and temperatures. **Acrypel** is environmentally friendly and safe for plants and animals.

## APPLICATION

**Acrypel** is best applied using a hand held garden pump sprayer using a flood coat technique from the bottom up. Application rate will vary with the porosity of the surface.



## PACKAGING

**Acrypel** is available in 1 and 5 gallon plastic containers.



## COVERAGE

Approximately 50-100 SF per gallon depending on surface porosity.

## SAFETY AND HANDLING



SDS



Liquid Roofing Products

# Acrycrete

## PRODUCT DESCRIPTION

**Acrylabs Acrycrete** is designed for refinishing and water-proofing all types of surfaces including decks, walk-ways, drivable surfaces, foundation walls, interior & exterior basement walls, moisture-retaining structures such as pools, cisterns and concrete shrubbery boxes. Reinforcing it with the Acrylabs Fabric Reinforcement will create a hard-wearing, waterproof membrane that is also resistant to standing water and ideal for subterranean waterproofing.

## APPLICATION

Mix until all powder is dissolved.

Batch will be a slurry-like consistency. Using a roof brush, apply a generous coat of

**Acrycrete** to clean dry surface.

While wet, embed the Acrylabs Fabric Reinforcement. Immediately apply a saturation coat to top of Fabric. When able to accept foot traffic, two additional coats of **Acrycrete** are applied to complete the system.



## PACKAGING

**Acrycrete** is packaged in a kit containing a 2 gallon container of liquid along with a package of cementitious powder. Both are poured into the 7 gallon container provided.



## COVERAGE

One **Acrycrete** Kit will yield approximately 200 sq. ft. per coat **or** 50 sq. ft. for the full Fabric Reinforcement system (4 coats sandwiching the Fabric).

- Resists acid rain and chemical pollutants to protect from chemical spills
- Nontoxic formulation is safe to apply and environmentally safe
- Easy application and cleanup



SDS





# Asphalt Emulsion

## PRODUCT DESCRIPTION

**Acrylabs Asphalt Emulsion** is a single component product used as a filler over existing roofs with ponding or alligating conditions. Also is an excellent filler to help smooth out Tar and Gravel roofs. **Asphalt Emulsion** is compatible with existing asphalt-based products or over Acrylabs Base System coatings. **Asphalt Emulsion** is solvent free, asphalt emulsified with bentonite clay and water. Cold applied and non-flammable, this product is both corrosion-resistant and waterproof when dry. **Asphalt Emulsion** does not crack if applied in built-up layers. If cracking occurs, re-apply to fill voids.

## APPLICATION

Pour or scoop from pail into low area. Level with a screed board (similar to floating cement). Deeper areas may require several layers. Do not apply when temperature is below 45 degrees F.



## SAFETY AND HANDLING



SDS



## COVERAGE

**Asphalt Emulsion** varies upon surface condition and depth of ponding area or pea gravel to be leveled. Multiple coats may be needed. Average about 5-15 gallons per 100 SF.

## PACKAGING

**Asphalt Emulsion** is available in 5 gallon plastic containers.





Liquid Roofing Products

# Patch Kit

## PRODUCT DESCRIPTION

**Acrylabs Patch Kit** consists of a gallon of Base Coat, a gallon of Finish Coat, Fabric Reinforcement, a brush, gloves and shears. The Base and Finish are formulated for maximum adhesion to new surfaces, such as concrete, plywood, OSB, EPS, fiberglass, cement board, and existing surfaces such as asphalt, BUR, modified bitumen, EPDM, single ply membrane systems and metal.

## APPLICATION

All materials and tools necessary to create 40 square feet of a liquid applied, fully reinforced membrane are contained in this **Patch Kit**.



## FEATURES

Reduces the need to bring multiple items to the roof—only one pail to carry up a ladder!

Containers are easily re-sealed and all components can be returned to the pail and ready for use on the next repair.

**Patch Kits** are easily stored on service trucks or on the shelf.

## COVERAGE

Covers 40 SF per kit.

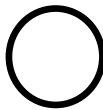


Instructions

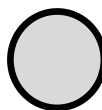
## Available Colors



Black



White



Aluminum Gray



**Liquid Roofing Products**

# Tool Kit

**Acrylabs Tool Kit Includes:**

- 4 Brushes
- 2 Heavy Duty Brushes
  - 6 Pair of Gloves
  - 2 Shears
- 2 Shear Holsters
- 2 18" Roller Frames
- 2 Extension Poles
- 12 Foam Roller Sleeves





**Liquid Roofing Products**

## **Coverage Rates**

<b><i>Fabric Roll Size</i></b>	<b><i>Length</i></b>	<b><i>*Gallons Base Needed</i></b>	<b><i>Pails required (per single roll)</i></b>
4 inch	300	3.75 gallons	1
6 inch	300	5 gallons	1
12 inch	300	8.75 gallons	2
18 inch	300	12.5 gallons	3
24 inch	300	16.25 gallons	4
5 square roll		13.75 gallons	3
10 square roll		25 gallons	5

\*Round up to the nearest pail

**Brushable Sealant – Fasteners=300 Fasteners/Gallon**

**Metal Seams=150 L.F. /Gallon**

<b><i>Roof Size</i></b>	<b><i>Base (in pails)</i></b>	<b><i>Finish (in pails)</i></b>	<b><i>Fabric</i></b>
100 S.F. (1 sq)	-	1	1 roll-5 square
200 S.F. (2 sq)	1	1	1 roll-5 square
400 S.F. (4 sq)	2	2	1 roll-5 square
1,000 S.F. (10 sq)	5	5	1 roll-10 square
1,200 S.F. (12 sq)	6	6	1 roll-10 square & 1 roll 5 square
1,400 S.F. (14 sq)	7	7	1 roll-10 square & 1 roll 5 square
1,600 S.F. (16 sq)	8	8	1 roll-10 square & 1 roll 5 square
1,800 S.F. (18 sq)	9	9	1 roll-10 square & 1 roll 5 square
2,000 S.F. (20 sq)	10	10	2 rolls - 10 square
5,000 S.F. (50 sq)	25	25	5 rolls - 10 square
10,000 S.F. (100sq)	50	50	10 rolls - 10square

Details such as protrusions, curbing, parapets, etc. may require various size fabrics to accommodate and require additional Base Coat to imbed

***Tip: 1 Square = 1 Pail (all 4 coats)***

***5-gallon pails***

# Not just Roofing ...



# ... Waterproofing

---

*Find us on Social Media*

