



Liquid Roofing Products

Est. 1998



AcryLabs Liquid Applied Roof Membrane - Systems

Why choose AcryLabs?

AcryLabs provides liquid applied roof membrane systems.

Our A.L.A.R.M. - Systems are comprised of multiple applications of a high-performance acrylic formulation combined with Fabric Reinforcement.

The resulting membrane will be 45-50 dry mils when completed and is totally seamless, fully adhered, self-flashing and highly durable.

The membrane is UV resistant and can be renewed, along with the warranty with a single maintenance coat.



MAXIMUM ADHESION

MAXIMUM PERFORMANCE

MAXIMUM LIFE

Description

The AcryLabs composite membrane is made up of multiple applications of high-performance acrylic coatings with a fabric reinforcement embedded between coats. The fully reinforced, 45-50 mil membrane is applied directly to existing roof surfaces including:

- Modified bitumen, fully adhered or torch applied, smooth or granular
- EPDM (rubber)
- Built-up Roofing (BUR)
- PVC, TPO and other single ply materials
- Sprayed Polyurethane Foam (SPF)
- Metal Roofing

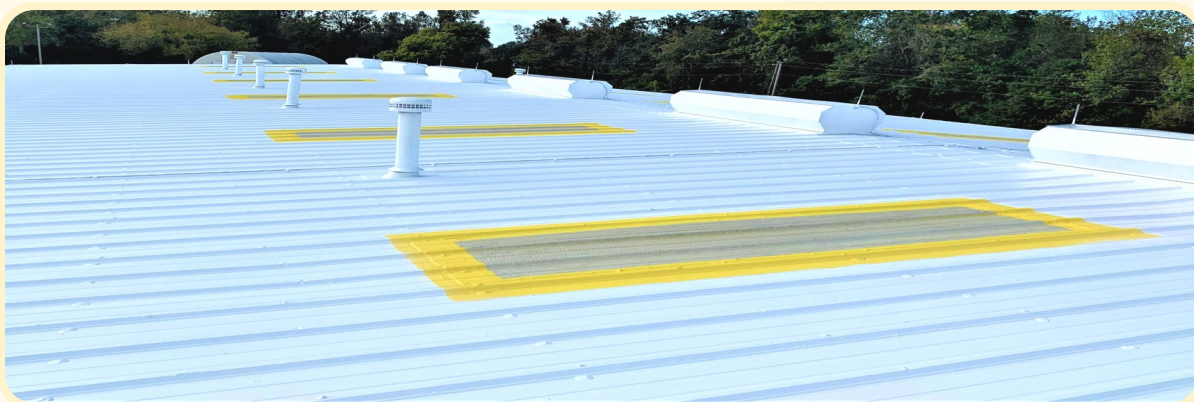


Additionally, the AcryLabs membrane can be applied directly to new construction surfaces including:

- Cover Board (Perma-Base, Dens Deck, Securock, Invinsa Board, etc.)
- Rigid Insulation (polyiso, expanded polystyrene, extruded polystyrene)
- Plywood and OSB

The AcryLabs membrane is self-flashing and adheres to building materials including:

- Masonry (concrete, brick, block, stucco, EIFS, etc.)
- Metals (both ferrous and non-ferrous)
- PVC piping
- Wood
- Asphalt
- Fiberglass



Features

Seamless

Applied as a liquid, the resulting membrane is totally seamless and monolithic across the entire roof. The fully reinforced, single ply membrane is manufactured in place on the existing roof surface. All penetrations, curbs, parapets, and copings are flashed with the same materials, eliminating potential problems at these locations. Additional boots, clamps or other accessories are not required.

Renewable

The membrane resists UV degradation and shows little effects from many years of exposure to sunlight. Thus, the roof and the warranty can be renewed after a decade of service with the application of a single maintenance coat.

Flexible

The durable acrylic membrane remains highly flexible despite wide temperature fluctuations. Tests indicate that the membrane performs well at extreme temperatures.

Reflective

Energy Star Rated Reduces need for air conditioning.

UV Resistant

Most roofing and building materials degrade in presence of UV light. BUR cracks, EPDM shrinks, PVC loses plasticizer but acrylics are resistant.

Waterborne

All AcryLabs products are water-based and safe for the applicator, building occupants and the environment.

Sustainable

AcryLabs systems recycle the existing roof in place, eliminating tear-offs and reducing landfill waste. The renewable membrane can be maintained indefinitely with periodic re-coats, extending roof life and lowering long-term environmental impact.



- 💧 Eliminates the need for tear-offs
- 💧 No expensive equipment required
- 💧 Easy to install & user friendly
- 💧 Versatile Application



Roll On



Brush On



Spray On

Warranties

Superior ingredients means superior performance and that enables us to offer the industry's most comprehensive warranties on our products. AcryLabs offers renewable manufacture warranties and performance & labor warranties. These warranties can be renewed after its service life, and in most cases with the application of a single maintenance coat.



Approvals

Liquid applied, acrylic roof systems were first developed for use in the mid 1970's and have proven to be durable and effective over the years. AcryLabs roof systems have been extensively tested and carry Factory Mutual approval as a Class 1 roof cover – the stand-alone roof approval for all major manufacturers of low slope roofing. Additionally, Factory Mutual approves AcryLabs membranes with a Class A fire rating. AcryLabs also meets or exceeds the industry standard for liquid applied acrylic roofing – ASTM D6083. The Cool Roof Rating Council lists AcryLabs Reflective White finish coating as exceeding minimum requirements for a “cool roof” with excellent solar reflectance and thermal emittance.

AcryLabs Liquid Applied Roof Membrane-Systems offer a simpler and more effective alternative to single ply, torch applied and built-up roofing. AcryLabs systems are user friendly with attractive features and benefits including:

- 💧 Eliminates costly tear-offs and disposal of existing roofing
- 💧 Easy application using simple, cost-effective tools and equipment
- 💧 Water-based formulations with no harmful solvents
- 💧 Simplified flashing solutions for complex roof details



AcryLabs Products

Base Coat

a water based, 100% acrylic elastomeric product and is a component of the AcryLabs Liquid Applied Roof Membrane - Systems. It is used to embed and adhere AcryLabs Fabric Reinforcement. The **Base Coat** formulation is engineered for maximum adhesion to new surfaces, such as concrete, plywood, OSB, EPS, fiberglass, cement board, and existing surfaces such as asphalt, BUR, modified bitumen, EPDM, single ply membrane systems and metal.

Finish Coat

a water based, 100% acrylic elastomeric product and is a component of the AcryLabs Liquid Applied Roof Membrane - Systems. The **Finish Coat** formulation is engineered for maximum adhesion to new surfaces, such as concrete, plywood, OSB, EPS, fiberglass, cement board, and existing surfaces such as asphalt, BUR, modified bitumen, EPDM, single ply membrane systems and metal. **Finish Coat** cures to a strong, durable finish that is easily maintained and is used as the final coats for the AcryLabs Roof Systems.

Fabric Reinforcement a high strength, stitch bonded, reinforcement fabric and is a key component of AcryLabs liquid applied roofing systems. **Fabric Reinforcement** is lightweight and flexible, yet tough and durable and is used with AcryLabs fully reinforced or partially reinforced roof membranes.

DEK-coat

a water based, 100% acrylic elastomeric product. It can be applied to the walking surfaces of decks and balconies with the fully reinforced AcryLabs Base System or as a stand alone coating. The **DEK-coat** formulation is engineered to perform well under normal foot traffic while providing a seamless and waterproof membrane. **DEK-Coat** is formulated for maximum adhesion to new and existing deck surfaces including fiberglass, plywood and concrete. **DEK-coat** cures to a strong, durable finish that is easily maintained. **DEK-coat** is also an excellent coating over the AcryLabs Acrycrete System.

Fusion-X

a water based acrylic polymer product infused with silicone polymer for advanced standing water resistance. It can be applied over the AcryLabs Base System and/or AcryLabs Finish Coats in areas that are prone to long term standing water. Note: NRCA recommends all roofs have positive drainage. **Fusion-X** formulation is engineered to perform well under normal foot traffic while providing a seamless and waterproof membrane.

Brushable Sealant

be

a water based, 100% acrylic formulation similar to AcryLabs coatings but enhanced to be heavier bodied and contains Kevlar reinforcement. **Brushable Sealant** is formulated to adhere to clean surfaces and is designed to address seams and fasteners on metal roofs. Can also be used to smooth irregular surfaces, fill joints, cracks and imperfections on existing deck surfaces.



Metal Prep

a single component water based, highly effective acrylic coating used to address rusted metal. The **Metal Prep** formulation is engineered for maximum adhesion to all types of rusty metal and provides excellent surface corrosion protection and prevents rust bleed through prior to application of **AcryLabs Liquid Applied Roof Membrane - Systems**.

EPDM Rinse Prep

an easy to use and water based EPDM cleaner that is formulated to promote maximum adhesion of **AcryLabs Liquid Applied Roof Membrane - Systems**. It is used to remove the oxidized carbon black from the EPDM surface and can also be used on other existing roof surfaces that require a cleaning.

Liquid Walk Pad

a water based, 100% acrylic elastomeric product pre-mixed with rubber granules to provide texture and slip resistance. **Liquid Walk Pad** has been engineered to exhibit excellent elongation, UV resistance and weathering characteristics. The **Liquid Walk Pad** formulation is engineered for excellent adhesion to properly prepared substrates.

New Clear

a water based, 100% clear acrylic elastomeric coating used for sealing and renewing acrylic and fiberglass skylights. **NewClear** cures to a strong, durable finish that is easily maintained.

Acrypel

a high quality, silane/siloxane based acrylic water repellent that is formulated for maximum durability and adhesion. **Acrypel** can be applied to new or restored surfaces, high porosity concrete, split face block, brick, adobe, limestone, granite, sandstone, terracotta, stucco & mortar. **Acrypel** is an excellent block sealer and can be used on most vertical or horizontal exterior and above grade masonry surfaces. **Acrypel** performs well in a variety of climates and temperatures. **Acrypel** is environmentally friendly and safe for plants and animals.

Acrycrete

designed for refinishing and water-proofing all types of surfaces including decks, walk-ways, drivable surfaces, foundation walls, interior & exterior basement walls, moisture-retaining structures such as pools, cisterns and concrete shrubbery boxes. Reinforcing it with the **AcryLabs Fabric Reinforcement** will create a hard-wearing, waterproof membrane that is also resistant to standing water and ideal for subterranean waterproofing.

Asphalt Emulsion

free,

a single component product used as a filler over existing roofs with ponding or alligating conditions. Also is an excellent filler to help smooth out Tar and Gravel roofs. **Asphalt Emulsion** is compatible with existing asphalt-based products or over **AcryLabs Base System** coatings. **Asphalt Emulsion** is solvent asphalt emulsified with bentonite clay and water. Cold applied and non-flammable, this product is both corrosion-resistant and waterproof when dry. **Asphalt Emulsion** does not crack if applied in built-up layers. If cracking occurs, re-apply to fill voids.

Patch Kit

consists of a gallon of Base Coat, a gallon of Finish Coat, **Fabric Reinforcement**, a brush, gloves and shears. The Base and Finish are formulated for maximum adhesion to new surfaces, such as concrete, plywood, OSB, EPS, fiberglass, cement board, and existing surfaces such as asphalt, BUR, modified bitumen, EPDM, single ply membrane systems and metal.

Not just Roofing ...



... Waterproofing

Protect Your Roof with an A.L.A.R.M. System

Find us on Social Media

